

A NEW HOME FOR INDIANA ETA



Alumni leaders have long understood the necessity for a new facility for the chapter. In 2003, the chapter explored the feasibility of raising funds to build a new facility. A number of factors, including the economic climate and state of the undergraduate chapter ultimately resulted in a feasibility study reporting only \$151,400 could be raised.

Following the feasibility study, the AVC began a campaign effort to raise funds for the project. Thanks to the generosity of several alumni members, the effort raised just over \$100,000. While the amount was sufficient for the down payment on a new facility, the chapter has enjoyed the benefits of a debt-free house for decades, and the complications associated with taking on a large mortgage was unrealistic. Since the fundraising effort, the funds have remained in a money market account to be applied to a future housing project. With the long-term goal of a future fundraising effort, there has never been a withdrawal from the fund corpus, and the current balance is over \$106,000. All of the funds raised in the previous effort will be applied toward the proposed project.

Indiana Eta has never been more prepared for a major fundraising effort. In 2014, the AVC voted to partner with OmegaFi to develop a comprehensive alumni communication and fundraising plan. With expert guidance from OmegaFi, Indiana Eta enhanced alumni communication by launching a new, alumni-centric website, producing an annual chapter newsletter and providing regular email correspondence. In addition, Indiana Eta partnered with OmegaFi to launch our first annual fund campaign, exceeding our goal of \$20,000 in the 2014 calendar year. Alumni response to the annual fund appeals reiterated the deep bond that exists between Indiana Eta alumni members and our chapter, and demonstrated the level of commitment required to embark upon a major fundraising effort such as the proposed capital campaign.

The proposed capital campaign aims to build upon the progress made in the initial fundraising effort of the early 2000s, and several steps have already been taken to ensure the success of this campaign:

- The architectural firm of Architectural Designs, Inc. has reaffirmed the viability of the previous plans and updates have been made to meet current code.
- AVC members are committed to making their own financial contribution to the effort.
- The University is aware and supportive of the project.

The new house, which will honor the long history of the Sig house, will be brick with large white pillars. There will be ample space to host the entire chapter and guests for meals, social gatherings and will include a chapter and study room. The basement and lower level will boast 2,736 square feet, while the first and second floors will include nine bedrooms, for a total of 5,005 square feet of living space. The house also includes a 324 square foot covered porch. The facility will meet all code regulations, ADA compliance and include state of the art fire protection equipment, providing a safe and comfortable home for our members. The new fire equipment will not only meet local code requirements, but it will also fulfill the fire suppression system requirements set by the Grand Chapter at the 2015 Conclave.



Sigma Phi Epsilon INDIANA ETA CHAPTER

INDIANA TECH



THE PROPOSED \$1 MILLION CAMPAIGN TO SUPPORT INDIANA ETA'S FUTURE

For over 50 years, brothers of the Indiana Eta Chapter have called the "Sig" house at 1529 E Washington Blvd 'home.' The facility has welcomed decades of membership, serving as a safe harbor for the development of true brotherhood. The house has served as a study hall, residence, cafeteria, lounge, retreat and gathering place for more than 500 brothers.

Some alumni members may remember the Ep house, the facility adjacent to the Sig house. In the early 1990s, the Ep house was leveled, leaving the lot vacant. However, the chapter's main facility remained and the fraternity continued its proud history as an exceptional chapter of Sigma Phi Epsilon.

With the leveling of the Ep house, the strain on the Sig house increased as it served as the only gathering place for members and guests. The leaky basement with exposed wires and low ceilings, the lack of sufficient fire prevention equipment and the knob-and-tube wiring throughout the house all add up to a facility that does not meet standards of a safe and inhabitable facility. The house we all know and love has become a safety concern, threatening the well-being of our undergraduate brothers and guests.

The early 90s welcomed a project to improve the facility and the porch was rebuilt to address the years of use. Despite the blood, sweat and tears that have gone in to maintaining the facility since its construction in 1910, there has never been a major renovation to ensure the longevity of the structure. Finally, in its 105th year of existence, action is required to ensure the safety of our chapter house and its inhabitants.

ΣΦΕ

CHAPTER COUNSELOR

John Sims, '91

ALUMNI VOLUNTEER CORPORATION

Thomas Le, '02
President

Christopher Brown, '04
Vice President

Brian Wiederholt, '06
Treasurer

Brandan Haines, '96
Feasibility Study Lead

UNDERGRADUATE OFFICERS

Nathan Kirk, '13
President

Devin Stone, '14
Vice President

Kannen Murdock, '14
Treasurer

Kaleb Pasch, '14
House Manager

MORE ABOUT THE CAMPAIGN

While the University has made major improvements to its living facilities, the house has remained largely unchanged, weathered from over a century of wear and tear. Members of the chapter are faced with a tough decision: to save some money by choosing to live in the fraternity house which is outdated, unsound and, in some ways, unsafe; or choosing to live in one of the six state-of-the-art facilities provided through campus housing. Others choose to live off campus, as apartments present a more adequate living environment.

The Alumni Volunteer Corporation (AVC) has invested thousands of dollars to address the growing list of necessary repairs. However, the efforts and funds directed toward the house are overshadowed by more significant issues including the structure, foundation, leaky basement, internal infrastructure and the overall age of the facility. While the repairs meet smaller demands, putting band-aids on broken bones is not a viable financial solution for the future.

Indiana Eta is at a crossroads – either we come together to ensure the safety and longevity of our chapter facility, or the chapter remains in jeopardy of not filling the house due to undergraduate and parental concerns, and remains stagnant while the University grows and builds better facilities. The AVC deliberated for months over a solution to ensure the safety of the chapter and its members. Then, the AVC voted unanimously to test the feasibility of raising \$1 million to level the current facility and build a house worthy of the prestigious Indiana Eta name. The new facility will provide a comfortable and safe home for undergraduate and alumni members alike to be proud of.

To ensure the viability of a successful effort, the AVC has partnered with OmegaFi, a leading fraternity and sorority fundraising firm which has raised over \$80 million for similar projects. With the help of OmegaFi, the AVC will solicit project feedback from alumni members throughout the country and determine the plausibility of the project through their comprehensive feasibility study process.

With a dedicated Alumni Volunteer Corporation, a rock-solid and approved development plan and the professional help of OmegaFi, Indiana Eta has never been better positioned to embark upon such a monumental campaign.



INDIANATECH



INDIANA ETA TODAY

Indiana Eta remains the organization of choice for discerning undergraduate men at Indiana Tech. The chapter currently maintains a 3.12 collective GPA, higher than both the all-male and all-campus average, and the highest chapter GPA in five years. The chapter has also produced Ruck scholars in 2011, 2012, 2013 and 2014.

Chapter members are visible on campus, participating in a number of clubs and activities within the greater Fort Wayne community. Our brothers also maintain our long history of charitable involvement, participating in a number of local and national philanthropies, such as Big Brothers Big Sisters and the Mustard Seed Fundraiser.

Indiana Eta continues its commitment to undergraduate development, sending seven members to the 2015 Sigma Phi Epsilon Conclave, the most in our history. Additionally, the chapter has averaged 29 undergraduate members over the past five years. These men exemplify all it means to be a balanced man and represent our brotherhood in outstanding fashion.



SigEp ON CAMPUS & IN THE COMMUNITY

Indiana Eta members are heavily involved in these campus and community organizations and events:

- President's Council
- Student Executive Board
- Trick or Treat for Canned Goods
- Resident Assistants
- Lutheran Elementary School Scholarships
- Student Life Event Staff
- Big Brothers Big Sisters
- Peer Educators
- Tutoring Programs
- Club Basketball
- Club Ultimate Frisbee
- Men's Bowling Team
- Mustard Seed Fundraiser
- Indiana Tech Gaming Society
- Welcome Days & Forums for New Students



Sigma Phi Epsilon INDIANA ETA CHAPTER

INDIANA TECH

STANDARDS OF GIVING CHART

Types of gifts generally required to raise \$1 million. Pledges are payable over five years.

\$1 Million Goal

Number of Gifts Needed	Amount	Total to raise at this level	Cumulative Total
1	\$100,000	\$100,000	\$100,000
2	\$50,000	\$100,000	\$200,000
7	\$25,000	\$175,000	\$375,000
25	\$10,000	\$250,000	\$625,000
30	\$6,000	\$180,000	\$805,000
35	\$3,000	\$105,000	\$910,000
60	\$1,500	\$90,000	\$1,000,000
TOTALS:			
160		\$1,000,000	

The \$1 million campaign goal was developed through a comprehensive analysis of project costs. Estimated project costs include:

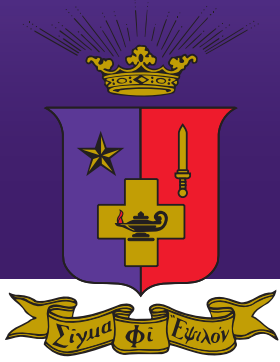
Demolition of current facility, paving parking lot and landscaping \$125,000	Construction of new facility \$750,000	Furnishings, interior supplies and equipment \$50,000	Contingency Fund \$75,000
--	--	---	-------------------------------------

Total project cost: \$1,000,000

BUILDING THE FUTURE

Indiana Eta is at a crucial point in its long and storied history. Given the current condition of the house, the facility that has harbored brotherhood for so many years is in jeopardy. We have been fortunate the facility has lasted as long as it has. However, we can no longer continue to sink chapter funds into a house reaching the end of its useful life. Without a dedicated capital campaign to establish a viable living facility for chapter members, new members will be deterred from considering the substandard living environment provided by the chapter as an option for their on-campus housing.

We are well on our way to securing our future. This important feasibility and planning study will pave the way for SigEp's success and give the AVC the data needed to determine how successful a capital campaign will be. The generosity shown by important alumni, like you, will make a great difference in helping ensure the longevity of our beloved chapter.



Sigma Phi Epsilon INDIANA ETA CHAPTER

INDIANA TECH

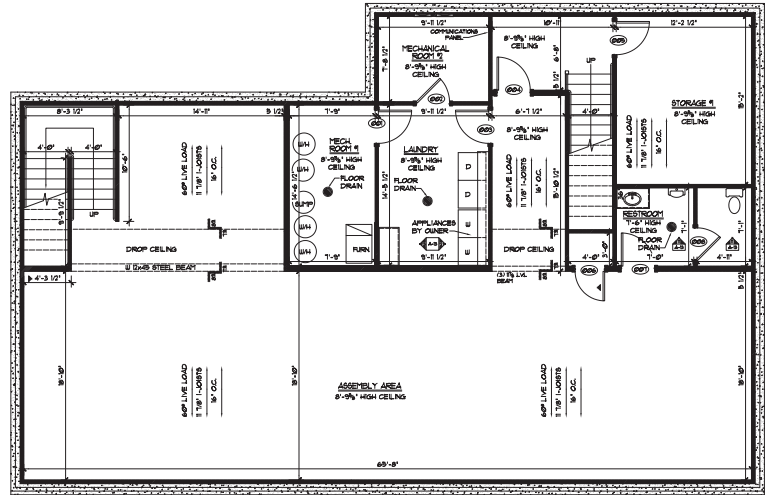
BUILDING THE FUTURE



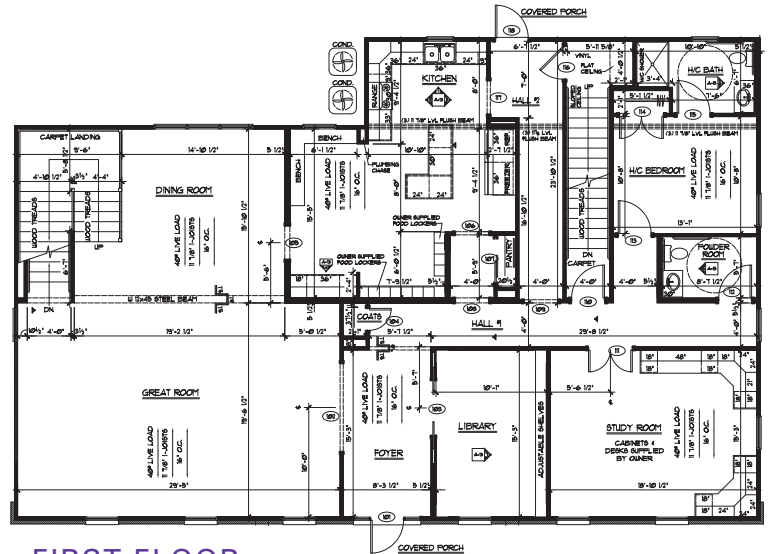
FRONT ELEVATION



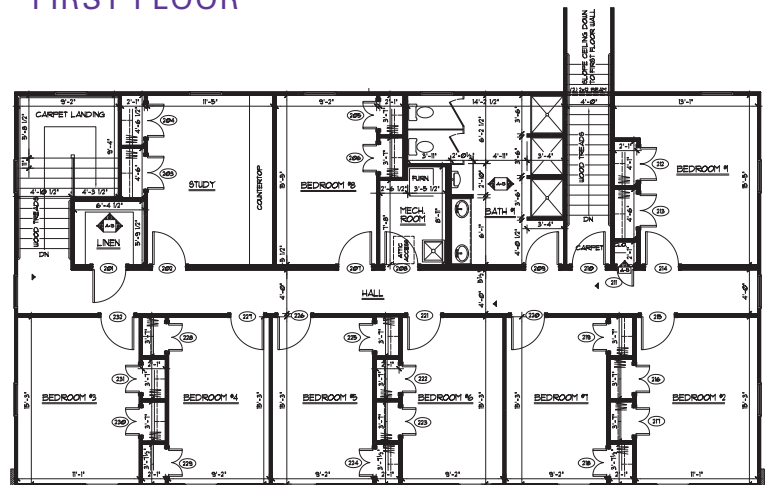
REAR ELEVATION



BASEMENT FLOOR



FIRST FLOOR



SECOND FLOOR